

STONE CURATORS

# QUICK SHIP PRODUCTS

[stonecurators.com](http://stonecurators.com)





## **ABOUT THE COMPANY**

Over the last 12 months, Stone Curators has been focused on simplifying and streamlining our product offering. We've consolidated and expanded simultaneously to create one large cohesive stoneyard, allowing us to stock the right product in the right quantities. It's a destination yard, worth a trip. We hope to see you soon!

## **ABOUT QUICK SHIP PROGRAM**

In light of the changes above, we are excited to introduce the Stone Curators Quick Ship Program. It's simple.

- Curated collections of top-selling reclaimed and cut-to-size stones
- Reasonable prices
- Delivered fast

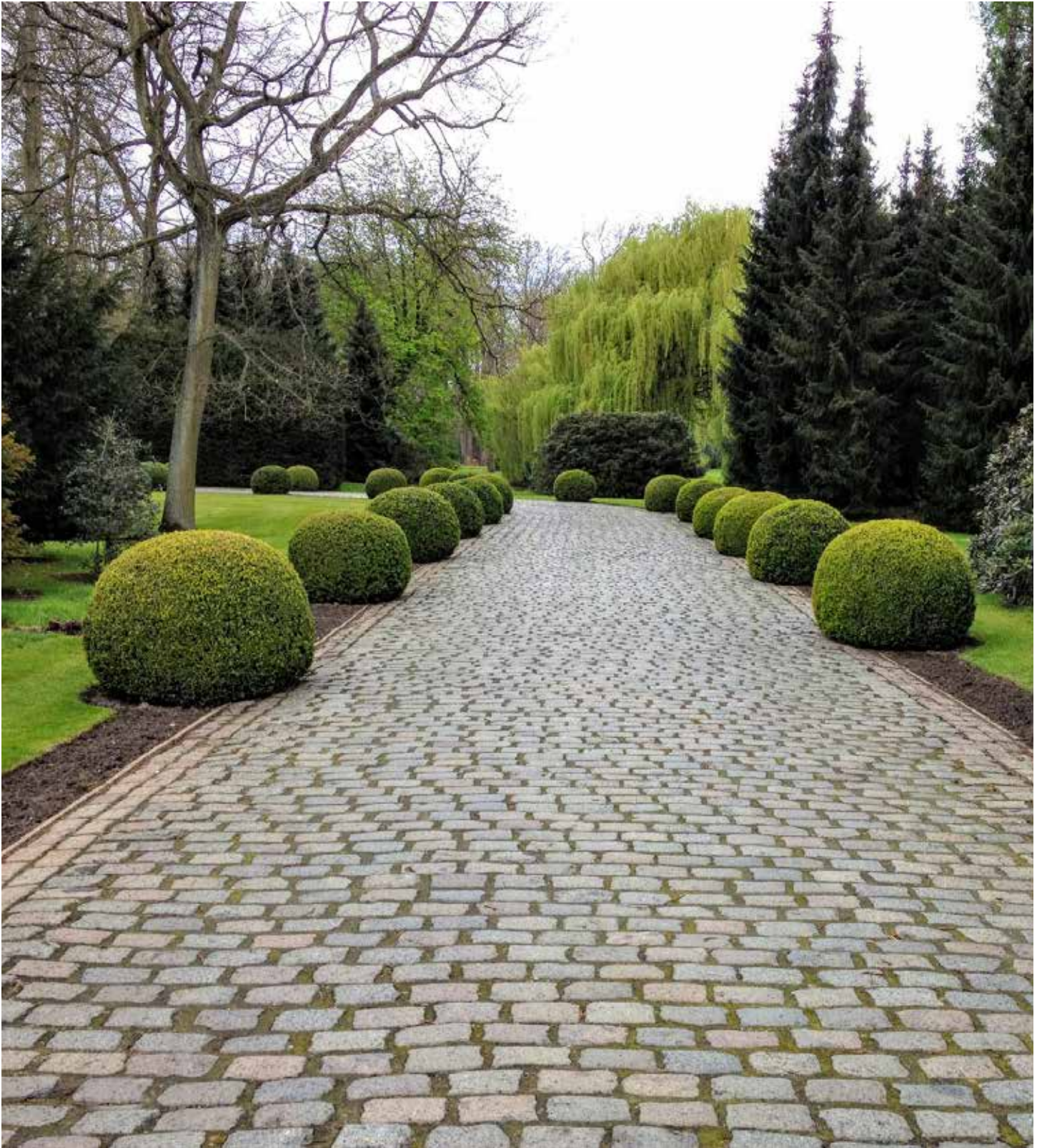
Every product in this catalog is now a great option for your quick turnaround and/or budget-conscious projects.



## TABLE OF CONTENTS

|                                      |    |
|--------------------------------------|----|
| Cobblestone                          | 1  |
| Pedestrian Plank Pavers              | 3  |
| Reclaimed Curbstone (Steps & Edging) | 5  |
| Patio Paving                         | 6  |
| Irregular Pavers                     | 7  |
| Reclaimed Veneer                     | 9  |
| Wallstone, Caps & Coping             | 10 |
| Garden Accents                       | 11 |
| Notes                                | 12 |
| Your Rep                             | 12 |

# COBBLESTONE



Reclaimed Porphyry Cobbles | \$1,170/ton (~55 sft/ton)



Reclaimed New England Medium Cobbles | \$750/pal  
(~32 sft/pal skinny side up, ~42 sft/pal broad side up)



Reclaimed Porphyry Cobbles | \$1,170/ton (~55 sft/ton)



Reclaimed New England Granite Jumbo Cobbles | \$900/pal



Reclaimed European Sandstone Cobbles | \$1,170/ton (~\$55 sft/ton)



Reclaimed New England Granite Super Jumbo Cobbles | \$15/sft



Reclaimed Bridge Squares | \$15/sft

# PEDESTRIAN PLANK PAVERS



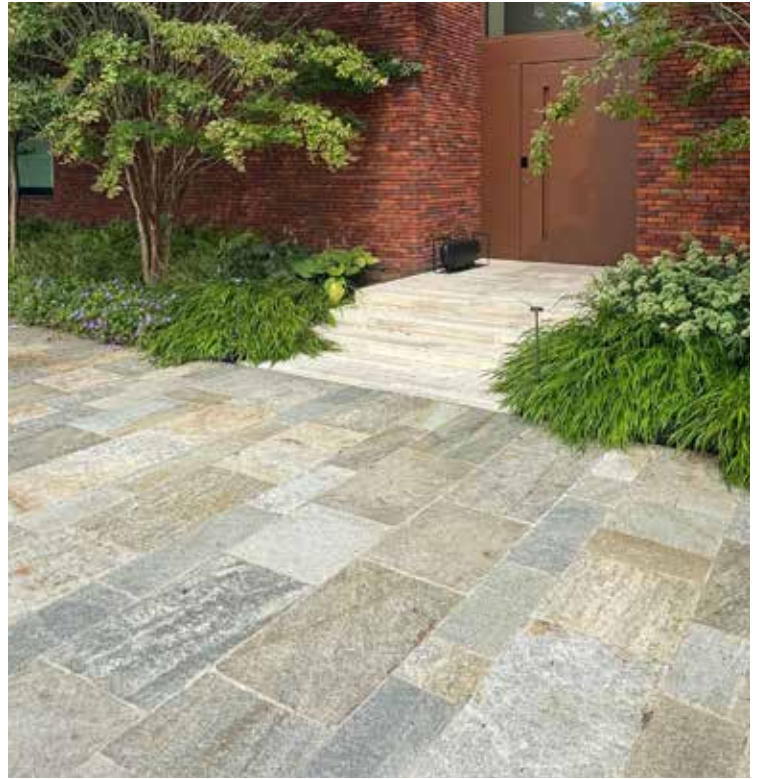
Reclaimed Footworn Plank Pavers | \$35/sft



Reclaimed First Generation Steppers | \$40/sft



**Reclaimed Rustic Granite Planks 24 x 48" | \$35/sft**



**Pietra Italia Gneiss | \$23/sft**



**Reclaimed Rustic Granite Planks 18 x 36" | \$35/sft**



**New England Third Generation Plank Pavers | \$45/sft**

# RECLAIMED CURBSTONE (STEPS & EDGING)



Reclaimed Curbstone (Step Grade) | \$95/lf



Reclaimed First Generation Edging | \$35/lf



Reclaimed Junior Edging | \$35/lf



Reclaimed Lawn Steps | \$55/lf

# PATIO PAVING



Strata Mist Cross Cut Gneiss | \$18/sft



Pietra Italia Gneiss | \$23/sft

# IRREGULAR PAVERS



Goshen Stone | \$16-20/sft



New England Granite Mix | \$42/sft  
*thermal top, live edge*



Full Color Natural Cleft Oversized Bluestone | \$18-20/sft



Dodlin Hill Granite | \$35/sft



Mystic Mountain | \$38/sft

# RECLAIMED VENEER



Reclaimed Thin Veneer | \$25/sft



Reclaimed Fullbed Veneer | \$650/ton (35 sft/ton)



Reclaimed Fullbed Veneer | \$650/ton (35 sft/ton)

# WALLSTONE, CAPS & COPING



Reclaimed Granite Block Mix Wallstone | \$350/ton



Reclaimed Pool Coping | \$95/sft



Reclaimed Wall Caps | \$95/sft

# GARDEN ACCENTS



Boulders | \$350/ton



Reclaimed Columns | \$175/lf



Reclaimed Posts | \$125/lf





YOUR VISION, OUR STONE

**stonecurators.com**

978.307.0988 / [curators@stonecurators.com](mailto:curators@stonecurators.com) / [@stonecurators](#)

**Showroom:** 76 State Street, Suite 202, Newburyport, MA 01950

**Stoneyard:** 934 Salem Street, Groveland, MA 01834